

## Moon Mother Hemp Company

2425 Canyon Boulevard  
Boulder, CO 80302  
jessica@moonmotherhemp.com  
(303) 442-2983  
Lic. #


## Sample: 11TRC003819.O4843

Strain: 250 mg Muscle Balm, 1 oz  
Sample Received: 11/06/2019; Report Created: 12/04/2019  
Leaf Inventory/Lot ID: ; Leaf Pre-Transfer Inventory/Lot ID:  
Leaf Batch ID: ; Leaf Pre-Transfer Batch ID:  
Leaf Manifest ID:

## 250 mg Muscle Balm, 1 oz (30.5g)

Other, Industrial Hemp  
External Batch ID: 10198





**15.34**  
**mg/unit**

THC Potency

**277.55**  
**mg/unit**

CBD Potency

**292.89**  
**mg/unit**

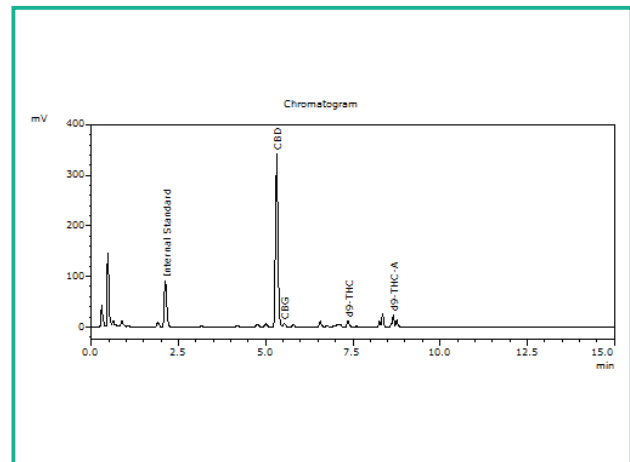
Total Potency\*

## Cannabinoids

1 Unit = 1 oz jar, 30.5g

Analyte	Mass mg/unit	Mass mg/g
THCa	6.71	0.22
Δ9-THC	9.46	0.31
CBD	277.55	9.10
CBDa	ND	ND
CBN	ND	ND
Δ8-THC	ND	ND
THCV	ND	ND
CBDV	ND	ND
CBG	5.49	0.18
CBGa	ND	ND
CBC	ND	ND
<b>Total</b>	<b>299.21</b>	<b>9.81</b>

## Chromatogram



THC Potency = THCa \* 0.877 + Δ9-THC; CBD Potency = CBDa \* 0.877 + CBD; LOQ = Limit of Quantitation; Total Potency\* = Total THC + Total CBD. Unless otherwise stated all quality control samples performed within specifications established by the Laboratory.

908 N. Howard St., Suite 101  
Spokane, WA  
(509) 284-7522  
<http://traceanalytics.com/>  
Lic# 0014

*Aimee Soule*  
Aimee Soule  
Scientist I

Confident Cannabis  
All Rights Reserved  
support@confidentcannabis.com  
(866) 506-5866  
[www.confidentcannabis.com](http://www.confidentcannabis.com)



This product has been tested by Trace Analytics, Inc using valid testing methodologies and a quality system as required by state law. Values reported relate only to the product tested. Trace Analytics, Inc makes no claims as to the efficacy, safety or other risks associated with any detected or non-detected levels of any compounds reported herein. This Certificate shall not be reproduced except in full, without the written approval of Trace Analytics, Inc. Lic# 0014 - Foreign Matter (Visual Inspection) - Moisture (Moisture Analyzer) - Water Activity (Water Activity Meter) - Microbiological (3M Petrifilm/qPCR) - Potency (HPLC-UV) - Residual Solvents (GCMS) - Mycotoxins (ELISA). I-502 sampling is not performed by Trace Analytics.

## Moon Mother Hemp Company

2425 Canyon Boulevard  
Boulder, CO 80302  
jessica@moonmotherhemp.com  
(303) 442-2983  
Lic. #

## Sample: 11TRC003819.O4843

Strain: 250 mg Muscle Balm, 1 oz  
Sample Received: 11/06/2019; Report Created: 12/04/2019  
Leaf Inventory/Lot ID: ; Leaf Pre-Transfer Inventory/Lot ID:  
Leaf Batch ID: ; Leaf Pre-Transfer Batch ID:  
Leaf Manifest ID:

## 250 mg Muscle Balm, 1 oz (30.5g)

Other, Industrial Hemp  
External Batch ID: 10198



## Pesticides

Complete

Analyte	Concentration	Status
Propargite	0.291 PPM	Tested

LLOQ = Lower Limit of Quantitation of analytical method, LOQ = Limit of Quantitation of analytical method; The reported result is based on a sample weight with the applicable moisture content for that sample; Unless otherwise stated all quality control samples performed within specifications established by the Laboratory. >MAX = Value is greater than the upper limit of quantitation (ULOQ). Only compounds above the LLOQ are displayed on this document. PASS indicates no compounds above the LLOQ were determined and is not a determination based on any regulatory limit.

908 N. Howard St., Suite 101  
Spokane, WA  
(509) 284-7522  
<http://traceanalytics.com/>  
Lic# 0014



Derek Laine  
Senior Scientist

Confident Cannabis  
All Rights Reserved  
support@confidentcannabis.com  
(866) 506-5866  
[www.confidentcannabis.com](http://www.confidentcannabis.com)



This product has been tested by Trace Analytics, Inc using valid testing methodologies and a quality system as required by state law. Values reported relate only to the product tested. Trace Analytics, Inc makes no claims as to the efficacy, safety or other risks associated with any detected or non-detected levels of any compounds reported herein. This Certificate shall not be reproduced except in full, without the written approval of Trace Analytics, Inc. Lic# 0014 - Foreign Matter (Visual Inspection) - Moisture (Moisture Analyzer) - Water Activity (Water Activity Meter) - Microbiological (3M Petrifilm/qPCR) - Potency (HPLC-UV) - Residual Solvents (GCMS) - Mycotoxins (ELISA). I-502 sampling is not performed by Trace Analytics.

## Moon Mother Hemp Company

2425 Canyon Boulevard  
Boulder, CO 80302  
jessica@moonmotherhemp.com  
(303) 442-2983  
Lic. #

## Sample: 11TRC003819.O4843

Strain: 250 mg Muscle Balm, 1 oz  
Sample Received: 11/06/2019; Report Created: 12/04/2019  
Leaf Inventory/Lot ID: ; Leaf Pre-Transfer Inventory/Lot ID:  
Leaf Batch ID: ; Leaf Pre-Transfer Batch ID:  
Leaf Manifest ID:

## 250 mg Muscle Balm, 1 oz (30.5g)

Other, Industrial Hemp  
External Batch ID: 10198



## Residual Solvents

Complete

Analyte	LOQ	Limit	Mass	Status
	PPM	PPM	PPM	
Acetone	1500.0		ND	Tested
Benzene	0.6		ND	Tested
Butanes	1500.0		ND	Tested
Chloroform	0.6		ND	Tested
Cyclohexane	1164.0		ND	Tested
Dichloromethane	180.0		ND	Tested
Ethyl-Acetate	1500.0		ND	Tested
Heptanes	1500.0		ND	Tested
Hexanes	87.0		ND	Tested
Isopropanol	1500.0		ND	Tested
Methanol	900.0		ND	Tested
Pentane	1500.0		ND	Tested
Propane	1500.0		ND	Tested
Toluene	267.0		ND	Tested
Xylenes	1953.0		ND	Tested

LOQ = Limit of Quantitation; The reported result is based on a sample weight with the applicable moisture content for that sample; Unless otherwise stated all quality control samples performed within specifications established by the Laboratory. No compounds below the lower limit of quantitation will be reported as this is considered a limit test. ND indicates not detected or below lower limit of quantitation.



## Moon Mother Hemp Company

2425 Canyon Boulevard  
Boulder, CO 80302  
jessica@moonmotherhemp.com  
(303) 442-2983  
Lic. #

## Sample: 11TRC003819.O4843

Strain: 250 mg Muscle Balm, 1 oz  
Sample Received: 11/06/2019; Report Created: 12/04/2019  
Leaf Inventory/Lot ID: ; Leaf Pre-Transfer Inventory/Lot ID:  
Leaf Batch ID: ; Leaf Pre-Transfer Batch ID:  
Leaf Manifest ID:

## 250 mg Muscle Balm, 1 oz (30.5g)

Other, Industrial Hemp  
External Batch ID: 10198



## Heavy Metals

Complete

Analyte	Mass	LOQ	Limit	Status
	PPM	PPM	PPM	
Arsenic	ND	0.011		Tested
Cadmium	ND			Tested
Lead	2.900			Tested
Mercury	ND			Tested

Notes: Subcontracted by Dragon Analytical Laboratory, 627 Durell Rd SE, STE B105, Tumwater, WA 98513

LOQ = Limit of Quantitation; The reported result is based on a sample weight with the applicable moisture content for that sample; Unless otherwise stated all quality control samples performed within specifications established by the Laboratory.

Julie Kowalski  
CSO

